



**This is (for) Sanné Mestrom**

A monolithic object stands in the corner of the room. She/it is welded from aluminum and towers 3500mm high; she/it occupies 2800mm of the floor, on all fours. She/it pumps water by spraying, shooting, springing from a bronze ball into a cantilevered water catchment 1000mm off the ground. She/it operates with an internal irrigation system and rubber hose that is powered by an electrical cord - that whips violently across the gallery floor. Her/its shape is irregular and unpredictable; her/its form mimics a painterly gesture. She/it contorts, twists and turns whilst remaining immobile, her/its profile and her/its façade one. The surface of the sculpture is marked by the trace of a hand. Apprehensively she/it drips water relentlessly and marks the institutional floor, seeping, creeping and encroaching upon the electrical cord. She/it is shiny and glistens with pride despite her/its flaws. She/it is cumbersome, static and messy. Her/its industrial materiality is a cause for concern - in all her/its newness she/it is in disrepair. She/it literally weeps water and metaphorically weeps tears of fear, joy and empathy. With her/its anxieties and her/its strengths she/it looks back to history whilst being in her/its present and looking to her/its future.

Basque Country Spanish Civil War 1937 / Pablo Picasso Guernica 1937 / Dora Maar French Photographer 1997 / National Gallery of Victoria Weeping Woman 1986 / Australian Cultural Terrorists The woman in locker 277 1986 / Juan Davila Picasso's Theft 1986 / Filmka Dijkstra I see a woman crying 2009 / Harry Amnicus Weeping Woman 2012 / Sanné Mestrom Weeping Woman 2013

Text by Nikos Pantazopoulos



1. This is (for) Sanné Mestrom, text by Nikos Pantazopoulos, Winter 2013  
 2. Picasso, *Head of a Woman (Fernande)*, 1909, plaster  
 3. Picasso, *Weeping Woman*, pencil on paper, 1937  
 4. Henri Matisse, *The Dance*, installation view, taken by Henri Cartier Bresson, 1932  
 5. Thomas Houseago, *Baby*, plaster & wood, 2012  
 6. Henry Moore, *Reclining Woman*, plaster, 1951  
 7. Sanné Mestrom, *study for Weeping Woman*, 2013  
 8. Sanné Mestrom, *Untitled*, Ceramic, 2011  
 9. Picasso, *Weeping Woman*, oil on canvas, 1954  
 10. Sanné Mestrom, *Head*, ceramic, 2013  
 11. Matisse, *Lady with a Green Stripe*, oil on canvas, 1935  
 12. *Zeus*, from the sea off Cape Artemision. c. 460-450 B.C. Bronze  
 13. Sanné Mestrom, *Weeping Woman*, Commission for NEWH3, steel, aluminum, bronze, internal irrigation system, water, 2013  
 14. Henry Moore, *Reclining Figure*, wood, 1938  
 15. Ancient gears of Peru, bronze  
 16. Mexico, *Colima Acrobat*, 200 B.C. - A.D. 500, Buff ceramic  
 17. Sanné Mestrom, *study for Black Painting (tapesty)*, 2013  
 18. Frank Stella, from the series *Black Paintings* 1958  
 19. Thomas Houseago, *Decorative Panel* 2011  
 20. Sanné Mestrom, *The Dance* (detail), bronze, 2013  
 21. Picasso, *study for Sculpture of a Head (Marie-Thérèse)*, 1932  
 22. Filmka Dijkstra I can see a Woman Crying (Weeping Woman) 2009. Transcribed by Nikos Pantazopoulos



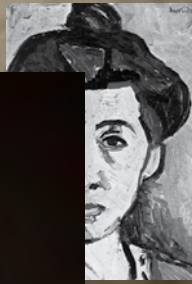
...I can see a woman crying and looking in different shapes. I can see a woman with her mouth a chin, and around her mouth an engine, I can see, head and different colours. I can see a woman that, dressed in all different colours, there are loads of different colours in different parts of the painting. I can see different colours, shapes and things in the picture. I can see different things. I can see the shapes that make her face. It looks like she is crying. I can see the shapes in the bottom half of her legs and it's like a mirror. Looks like a woman's accessories and a big hat. I can see all different faces. I can see that she looks dark. And worried. Yes. Like she's seen something see again. Gobsacked. Looks like she just discovered it. She's worried because someone is coming to war. She's worried she's done something wrong. It's like she's biting her nails a bit. Normally when you nervous you bite your nails. Or when you worried. Eating a tissue or something. Something is going to happen to her. There's tears coming out of her eyes just were the triangles are. And it's purple isn't it? Purple tears. And you can see one where it's like the colour of her skin. It's like orange and it's on the...



5



7



11



12



14



16



18 & 19



20



21

...I can see a woman crying, not just because she's sad but she might feel inside. It could be inside emotions. That could have been a friend and that friend had a bad moment. Someone could've posted a letter saying 'I'm coming for you' or something. She could just be sad about life because sad people show their emotions. She might just be lonely anyway. She might have a step mum who wrote her a letter saying 'Your next' and her step mum was like whips them and that. Evil. Or the other way around. Why is she crying? What's the matter? Did she go to the funeral? Where do you come from? Why have you got fingers on your face like that? Say where did you get your hat from? Say, what's up? And are you scared? She could be weeping because she's one of them people who cry a lot. You know she cries when she laughs. Or she's just mental. I don't think anyone mental would go like that. She is scared of the devil and what it does to people and that. She might be watching someone evil. Maybe she is happy and she is crying. Yeah crying with laughter. Tears of happiness. Her husband just came home from the war and he is alive. So she is crying for joy. It could be anything. When people with the X-factor they cry like they are sad but they cry because they are full of joy. Maybe she is crying because she is happy because someone bought her a sports car. Or she is just happy?

22

Sanné Mestrom is represented by Utopian Slumps, Melbourne  
 ISBN: 978-0-9922875-0-4

## THE INTERNAL LOGIC

Sanné Mestrom

19 July 2013 - 10 August 2013  
 Opening Thursday 18 July 2013, 6:00 - 8:00pm  
 Artist Talk Thursday 8 August, 5:30-6:30pm  
 West Space  
 Level 1, 225 Bourke Street, Melbourne, Vic, 3000

19 October 2013 - 2 February 2014  
 Opening Friday 25 October, 6:00 - 8:00pm  
 Latrobe Regional Gallery  
 138 Commercial Rd, Morwell 3840

West Space

LATROBE REGIONAL GALLERY

Latrobe  
 REGIONAL GALLERY

MADA  
 MONASH UNIVERSITY  
 ART DESIGN & ARCHITECTURE

CITY OF MELBOURNE  
 ARTS VICTORIA

